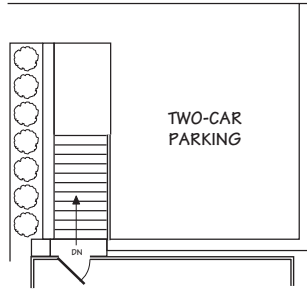


**MAIN LEVEL**  
10' CEILING



**Hagen  
Bergstrom**

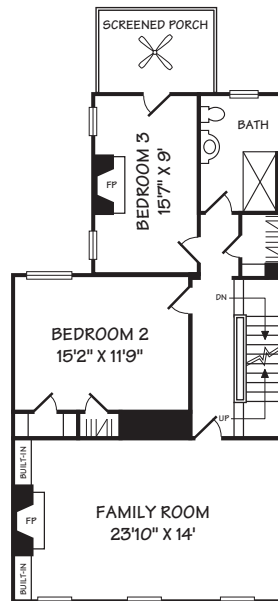
1820 WYOMING AVENUE NW, WASHINGTON, DC

©2025 HAGEN/BERGSTROM

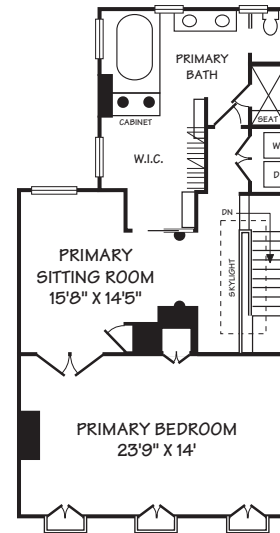
WWW.INTERIORFOOTPRINTS.COM

ALL ILLUSTRATIONS, DIMENSIONS AND SQUARE FOOTAGE ESTIMATES ARE APPROXIMATE  
AND MAY VARY FROM ACTUAL STRUCTURE. DIMENSIONS HAVE BEEN ROUNDED.

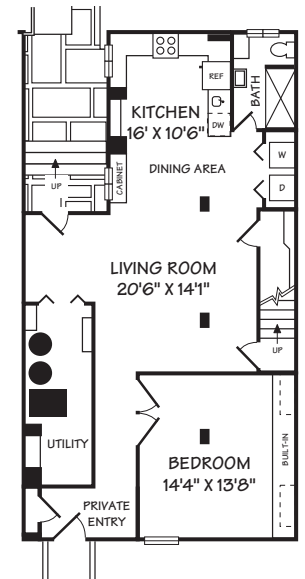
**ESTIMATED SQUARE FOOTAGE: 4000**



**SECOND LEVEL**  
9'6" CEILING



**THIRD LEVEL**  
8'10" CEILING



**LOWER LEVEL**